

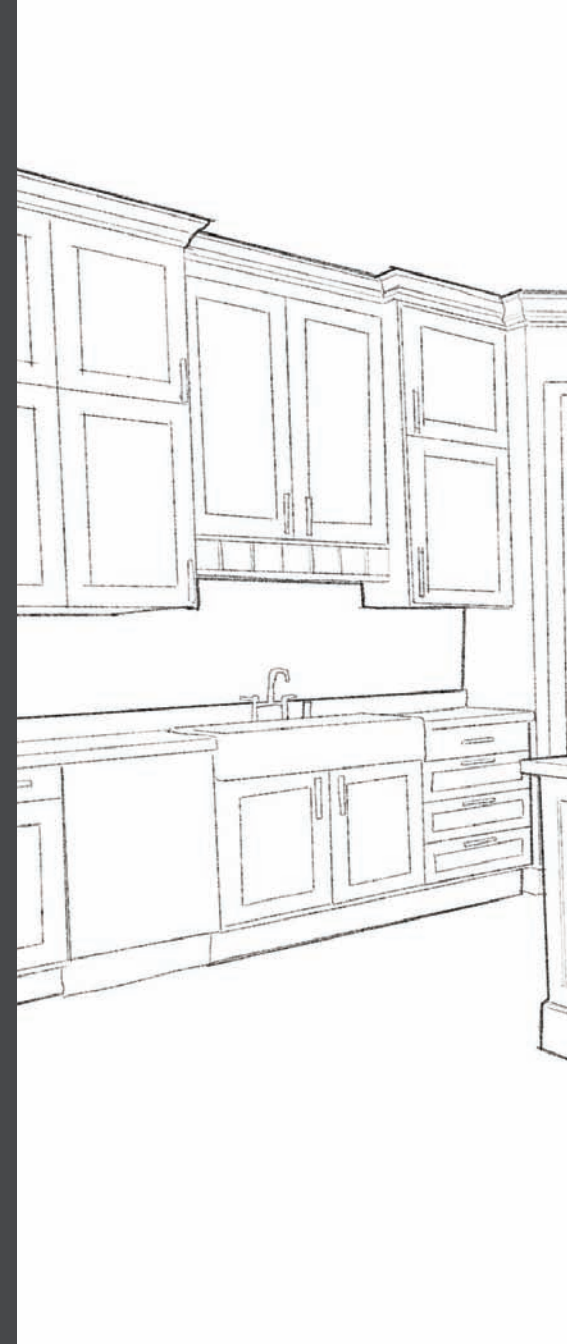


about stoll

Stoll Industries was formed after a lasting and successful tenure in the fireplace industry. Using their expertise in metal works, Stoll Fireplace, Inc. decided to broaden their custom metal designs to feature cabinets, walls, doors, drawers and backsplashes. Stoll Fireplace, Inc. was established in 1969 when Mr. William Stoll designed and hand-crafted a custom screen for his South Carolina home. After 48 years, Mr. Stoll's Christian values continue to be the guiding principles of the company's ethical standards and customer satisfaction. Today, the 3rd generation of the family continues to build on Stoll's reputation in the industry for innovation, customer support, and quality hand-crafted products for the home. Our wide range of fireplace products, decorative metal wall and backsplash cladding, floating shelves and cabinet/pantry doors can be found in the finest specialty stores and design centers all across US and Canada.



153 hwy 201 / abbeville, sc 29620
www.stollindustries.com





● doors
Decorative metal, custom-made doors, combining metal, glass and wood components, for kitchens, pantries and furniture
Continue on page 4

● drawers
Matching metal drawer plates complementing the decorative doors
Continue on page 18

● backsplashes
Custom backsplashes fabricated from stainless, brass, copper, steel or aluminum materials
Continue on page 20

● outdoor
Many products finished in noncorrosive materials making it perfect for outdoor environments
Continue on page 12

● components
Choose from a variety of inserts, frames and handles
Continue on page 14

● finishes
Choose from a variety of custom finishes
Continue on page 22



◀ style: industrial
finish: industrial black
glass: clear

○ doors

Stolls innovative cabinet doors are constructed from strong yet light weight metal materials, bringing a fresh new wave of finish options and designs to the cabinet world. These doors combine wood back frames along with glass and decorative metal inserts.

original

Simple and clean.

Continue on page 6

transitional

A design blend of traditional and modern.

Continue on page 9

industrial

Modern yet vintage design, featuring exposed raw elements.

Continue on page 7

designer

Subtle lines add depth and style.

Continue on page 10

old world

Forged corner brackets with hammered rivets.

Continue on page 8

modern

Clean lines with a touch of elegance.

Continue on page 11



original

*Material Shown: Steel
Finish Shown: Antique White
Handle Shown: Custom
Insert Shown: Satin Glass*

features:

- *Simple and clean*
- *One piece seamless metal frame formed over solid hardwood*
- *Door depth: 3/4" to 1 1/4"*
- *3-4 lbs per square ft.*





industrial

Material Shown: Steel

Finish Shown: Industrial Black

Handle Shown: Industrial

Insert Shown: White Linen Glass

features:

- *Modern yet vintage design, featuring exposed raw elements*
- *One piece seamless metal frame formed over solid hardwood*
- *Factory window design*
- *Door depth: ¾" to 1 ¼"*
- *4-5 lbs per square ft.*



old world

Material Shown: Steel

Finish Shown: Textured Black

Handle Shown: Old World

Insert Shown: Antique Glass

features:

- Forged corner brackets with hammered rivets
- One piece seamless metal frame formed over solid hardwood
- Door depth: $\frac{3}{4}$ " to $1\frac{1}{4}$ "
- 3-4 lbs per square ft.





transitional

Material Shown: Steel

Finish Shown: Antique Grey

Handle Shown: Transitional

Insert Shown: Bronze Tinted Satin Glass

features:

- A design blend of traditional and modern
- One piece metal frame formed over solid hardwood
- Decorative rivets added to faceplate for enhanced design
- Door depth: 1" to 1 1/4"
- 4-5 lbs per square ft.



designer

Material Shown: Copper

Finish Shown: Aged Copper

Handle Shown: Designer

Insert Shown: Bronze Tinted Satin Glass

features:

- *Subtle lines add depth and style*
- *One piece seamless metal frame formed over solid hardwood*
- *Raised inner edge profile*
- *Door depth: ¾" to 1 ¼"*
- *3-4 lbs per square ft.*





modern

Material Shown: Brass

Finish Shown: Polish Nickel

Handle Shown: Modern

Insert Shown: Satin Pattern Glass

features:

- Clean lines with a touch of elegance
- One piece seamless metal frame formed over solid hardwood
- 1" face ring
- Door depth: $\frac{3}{4}$ " to $1 \frac{1}{4}$ "
- 4-5 lbs per square ft.





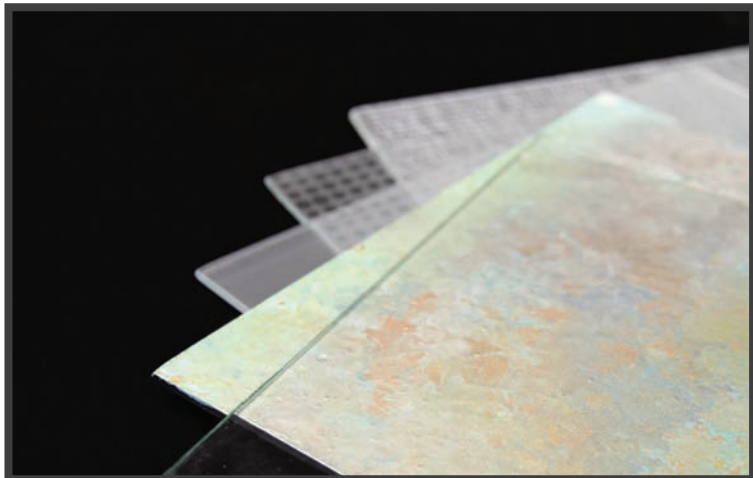
style: original ▶
finish: stainless steel
glass: grey tinted satin

● outdoor

Take innovative style and design to your outdoor rooms and living spaces using weather resistant materials providing long lasting enjoyment.

With our unique combinations of stainless, aluminum, brass, copper, cypress and poly components, Stoll can create decorative wall panels, doors, shelving and backsplashes.

inserts



glass

Stoll has partnered with multiple glass companies to offer a wide variety of glass inserts.

options include:

- *Antique*
- *Clear (tinted glass)*
- *Satin (matte finishes and tinted glass)*
- *Organic ceramic printed designs*
- *V-Groove and bevel options*



metal

Customize our metal framed door with Decorative metal inserts offer an endless opportunity as wire and mesh offer unique accents to your door.

options include:

- *Steel*
- *Copper*
- *Other metals available*
- *Wire and Mesh available in powdercoated or stainless*

frames

Choose from several options of standard wood or weather resistant frames. Custom color and wood varieties are available as well.

standard options



Maple



Knotty Alder



Black Stain

outdoor options



Cypress



Cellular PVC

handles

Stoll offers many standard handle designs with custom options available.



Designer



Factory



Craftsman



Transitional



Industrial



Modern




Contemporary



Hampton



◀ style: transitional
finish: antique grey
glass: bronze tinted satin



◀ finish: antique black

◀ finish: burnished copper

◀ finish: antique white

○ drawers

Metal drawer plates can be designed to compliment our decorative doors. Choose from the six standard door styles or customize to create a unique style.

customization:

Material: Available in Brass, Copper, Steel or Stainless

Finishes: Finishes available on page 22

Inserts: Inserts available on page 14

Handle: Handles available on page 16

features:

- One piece seamless metal frame formed over solid hardwood
- Attaches to any drawer box
- Drawer Depth: 3/4" - 1"
- Standard Oak wood frame used unless specified





◀ finish: aged copper

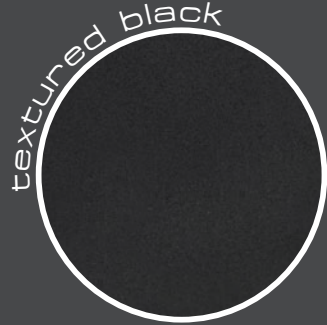
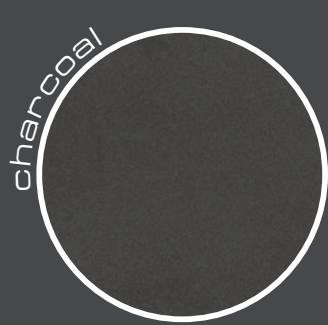
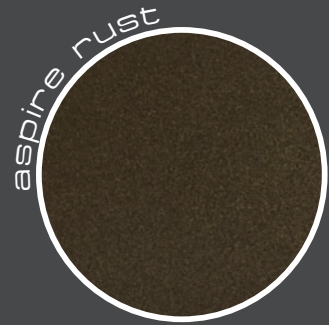
● backsplashes

Custom backsplashes are fabricated from steel, stainless, brass, copper, or aluminum materials in a variety of natural and powdercoated finishes. Using design software, each backsplash is laser cut to your specifications allowing you to bring the beauty of metal into your kitchen.



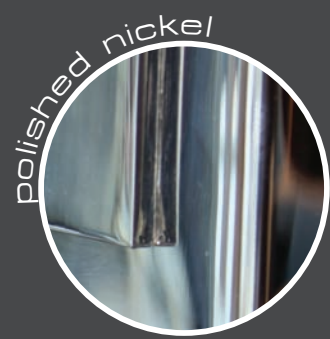
standard finishes ○

Our powdercoat process offers a durable, lasting finish.



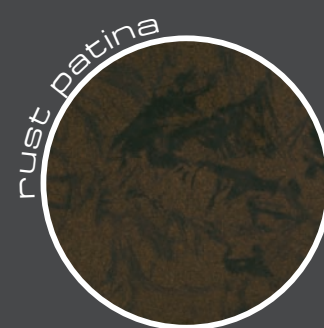
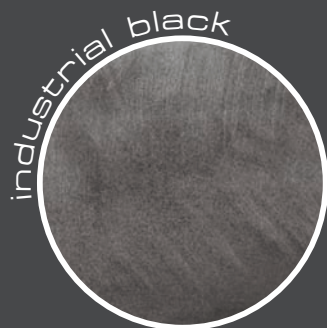
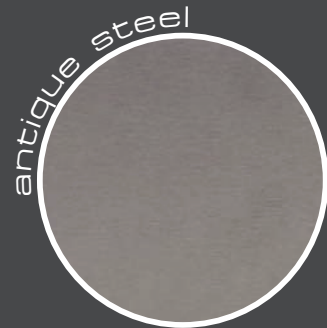
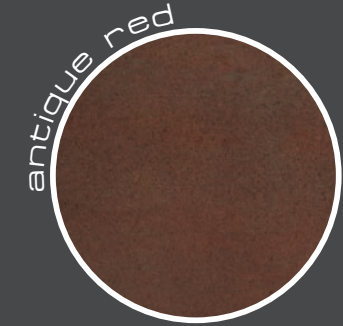
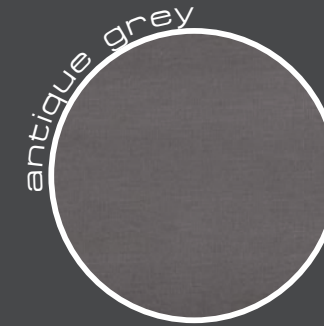
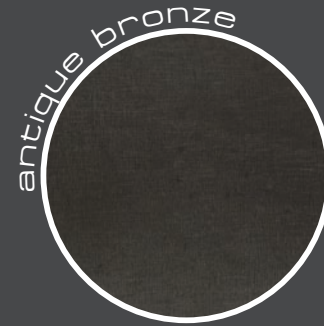
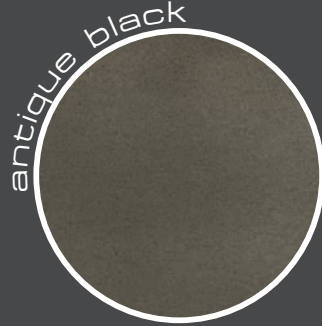
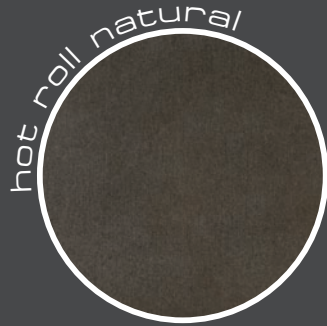
plated ○

Our plated products offers world class durability and finish.



premium ○

Our two-step hand-finished process makes each finished product unique.



The actual patterns and colorations of our hand-applied finishes may vary.

***requires additional upcharge*

from the heart of the craftsman . . .



www.stollindustries.com